



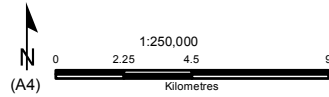
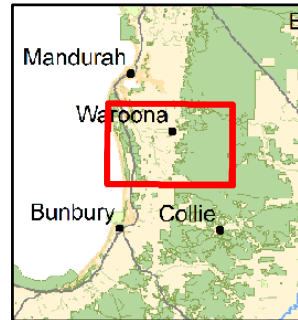
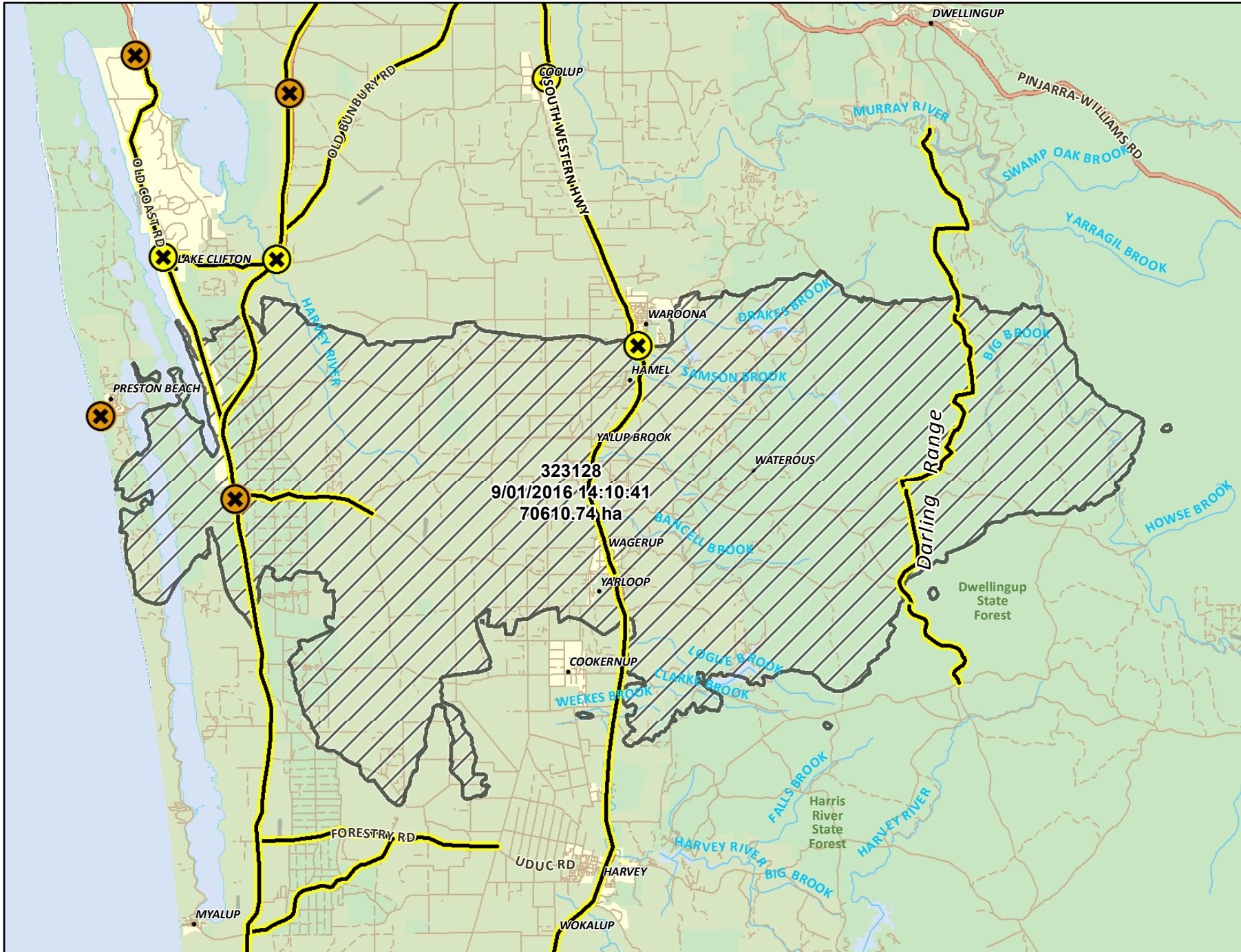


Waroona Public Information Map

Map produced at 3:50 PM, Jan 9, 2016

-  Road Closure
-  Vehicle Control Point
-  Full Sectional Road Closure
-  Fireshape at 2:10 PM 09/01/2016



Produced by the
Department of Fire &
Emergency Services



The Dept. of Fire and Emergency Services does not guarantee that this map is without flaw of any kind and disclaims all liability for any errors, loss or other consequence which may arise from relying on any information depicted. Roads and tracks on land managed by DPaW may contain unmarked hazards and their surface condition is variable. Exercise caution and drive to conditions on all roads.