



Map of Bush Fire Prone Areas Instructions for Use

Contents

Opening the <i>Map of Bush Fire Prone Areas</i>	2
Key features of the <i>Map of Bush Fire Prone Areas</i>	2
Searching the <i>Map of Bush Fire Prone Areas</i>	2
Interpreting the results of a search	4
Printing the <i>Map of Bush Fire Prone Areas</i>	6
Downloading the dataset for use in GIS	6
Providing feedback and suggestions for improvement.....	6
Troubleshooting	7
• My pop-up box has numbers in brackets, for example (1 of 2) appearing?	7
• Some areas of the Map are not drawing (loading) properly?	8
• Why can't I find my new property using the search function on the Map?	8

Opening the *Map of Bush Fire Prone Areas*

The Map is available from the Department of Fire and Emergency Services website at:
www.dfes.wa.gov.au/bushfireproneareas.

Users may also wish to bookmark the direct link to the Map:
<https://maps.slip.wa.gov.au/landgate/bushfireprone2016>

Do you have a colleague that is still accessing a previous edition of the Map through their cache? Remind them to 'refresh' or to access the latest edition using the above links.

Key features of the *Map of Bush Fire Prone Areas*

The Map, shown in Figure 1 below, uses an Esri-based mapping engine. It looks similar to Google Maps and works in a similar way.

At the top of the screen users can access links to the Instructions for Use, Frequently Asked Questions and the Feedback Survey. The search field and zoom buttons are available at the top left of the screen.

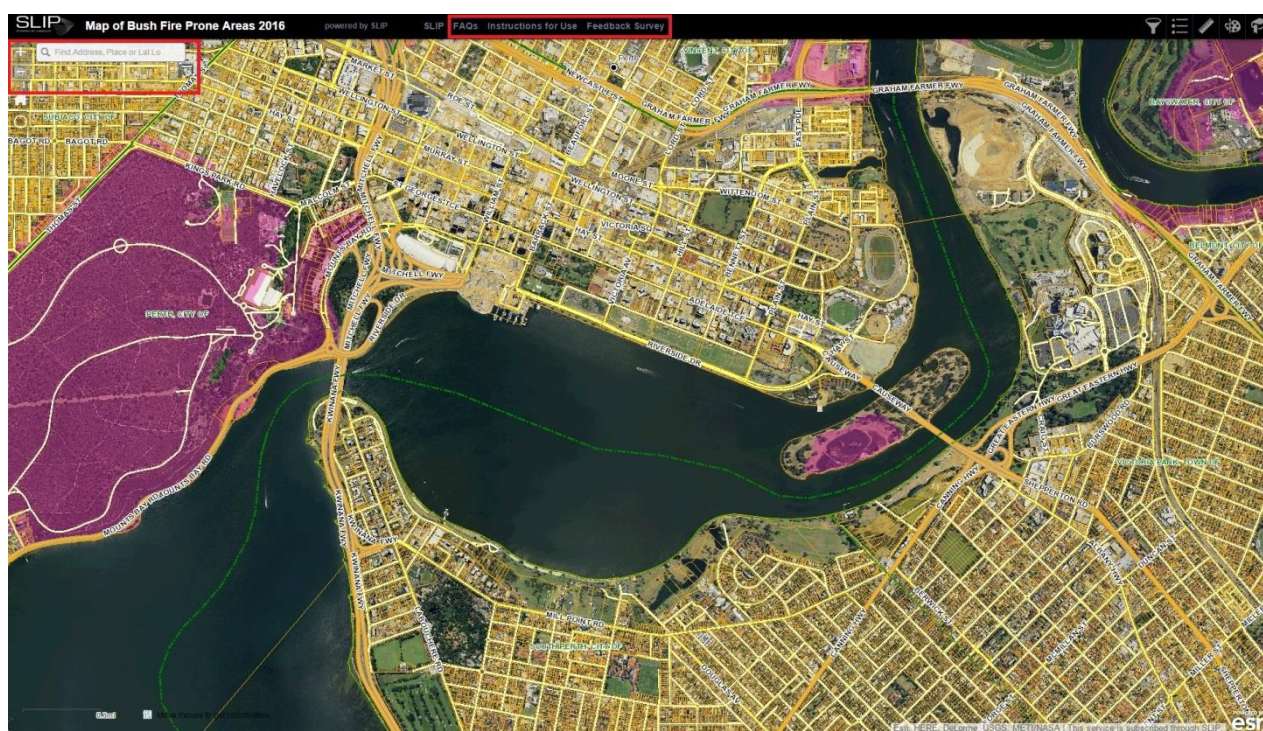


Figure 1

Searching the *Map of Bush Fire Prone Areas*

To search by place or address, type your location of interest into the search field in the top left of screen.

You may also search using GPS coordinates using a latitude, longitude format (for example, - 31.976,115.765). *Note there is no space after the comma between the coordinates.*

Users can also grab, drag, zoom and scroll to explore the Map using their mouse.

In addition, a new search feature has been added to the Map to assist users to find very new or proposed addresses. The Proposed Roads search is accessed through the first icon to the top right of screen. Click on the proposed roads dataset which appears in the search tab.

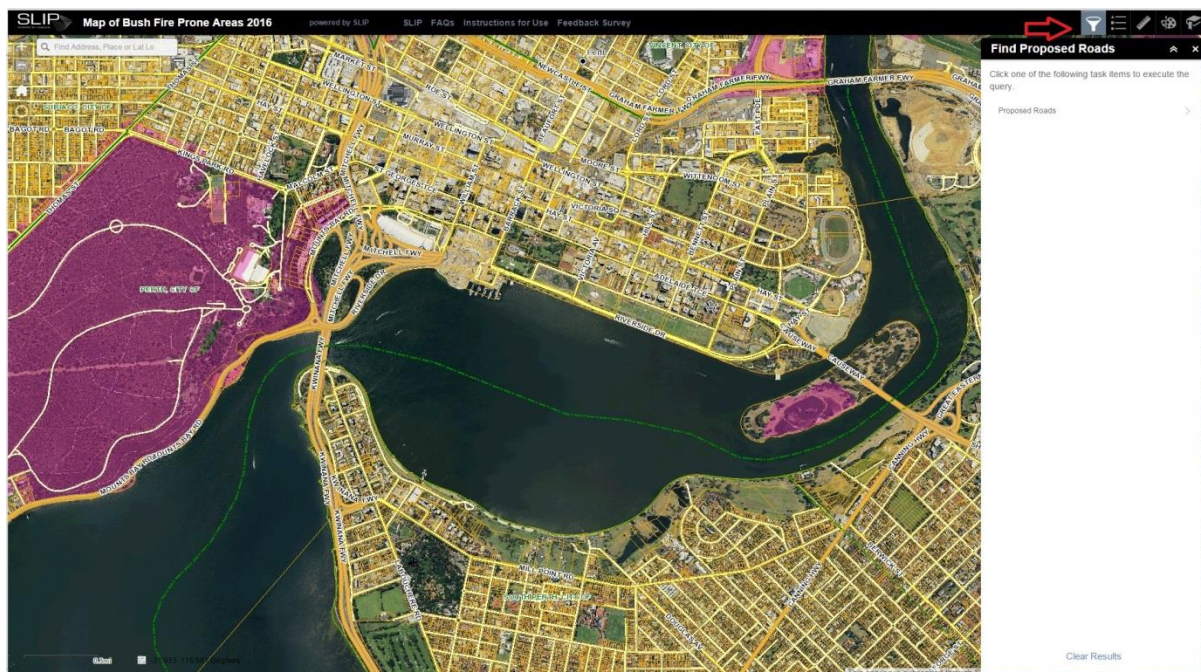


Figure 2

You may type the name of the road of interest in the 'Road Name is...' field or click on the drop down arrow next to this field to scroll through the full list of proposed roads for Western Australia.

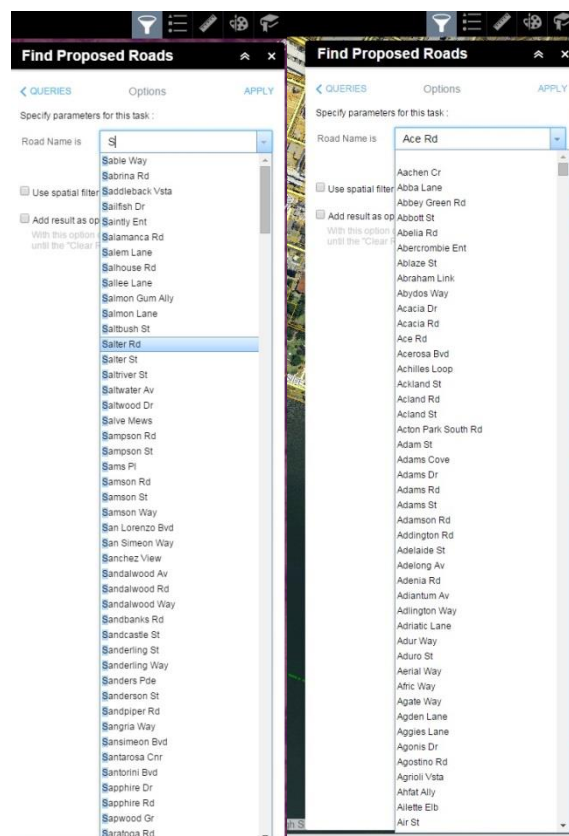


Figure 3

Click 'Apply' and the Map will zoom to the proposed road of interest. The proposed road will be displayed in green on the Map.

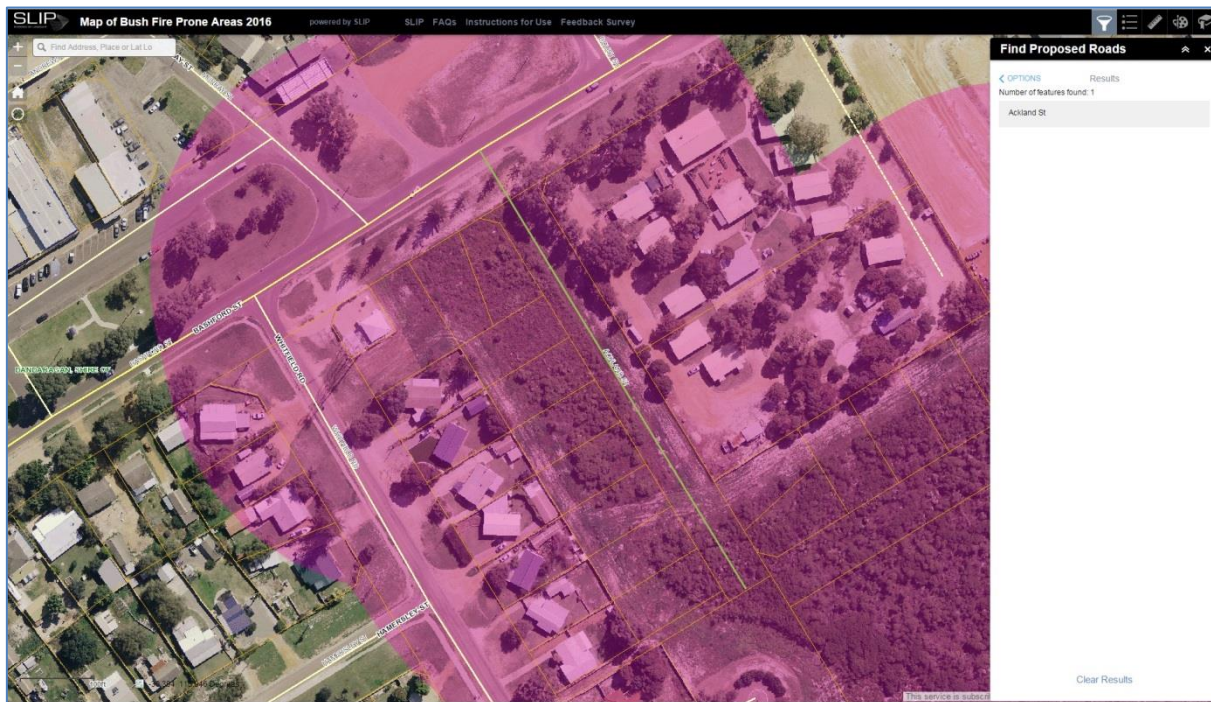


Figure 4

Interpreting the results of a search

The pink colour identifies all designated bush fire prone areas. The yellow lines show the cadastral layer (better known as property boundaries). Users will see these in detail when they zoom into the Map, as demonstrated in Figure 5 below.

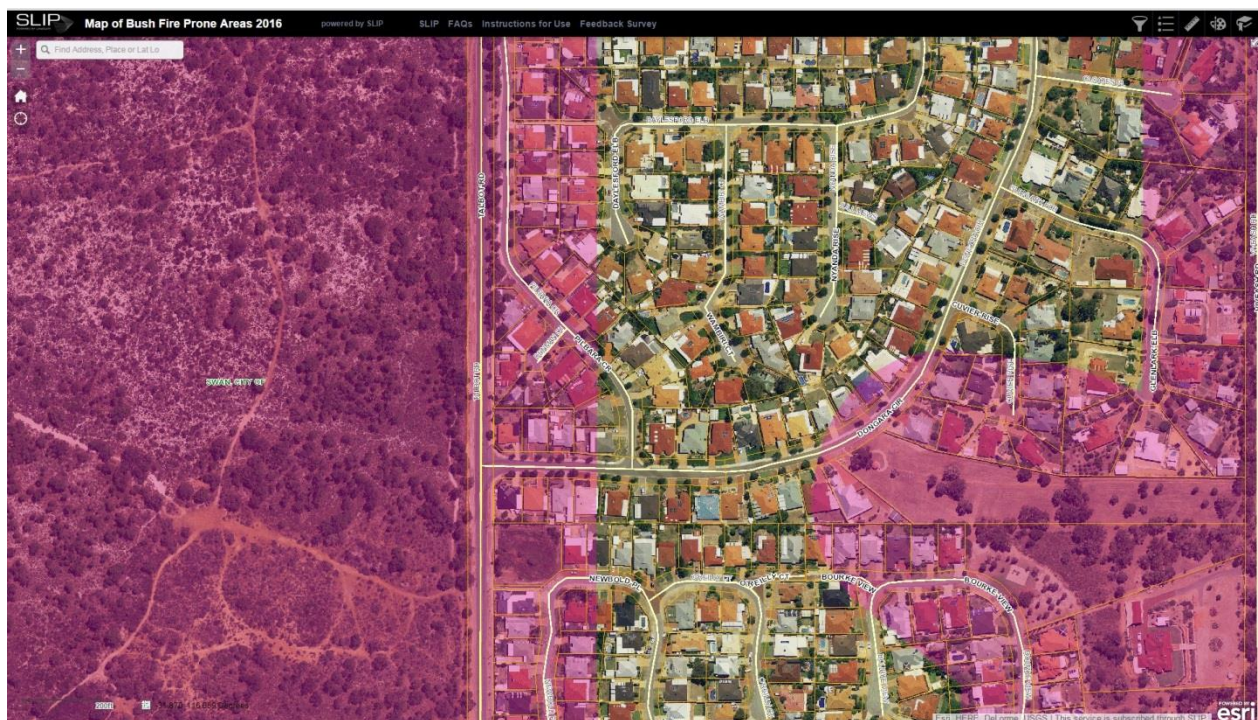


Figure 5

The aim of the Map is to inform the user whether a property of interest is in, or partially within, a designated bush fire prone area. Clicking within the yellow boundaries of a property will bring up a pop-up box informing the user whether the property is considered bush fire prone or not. The border of the property will change to a bright blue colour, so it is easy to identify which property the information relates to. Please note that the whole property does not need to appear pink to be considered bush fire prone. If any pink is inside of the property boundary, the pop-up box will inform the user that their property is considered bush fire prone.

Note: the four month transition period for properties first designated on 21 May 2016 has now concluded. The blue cross-hatched layer was removed from the Map from 21 September 2016 to signify the end of the transition period.

There are only two pop-up box options – one for those in bush fire prone areas (as shown in Figure 6), and one for those that are not considered bush fire prone (as shown in Figure 7).

Each pop-up box contains:

- the designation of the site – ‘Bush Fire Prone Area’ or ‘Not applicable’
- the designation date (DD/MM/YYYY format) for bush fire prone areas – note that bush fire prone areas that are continuing from 2015 will display both their 2015 and 2016 designation dates.
- local government/s for the location
- comments to explain the implications of the designation for the property and
- an overview paragraph explaining the Map and its implications
- webpage links for additional information: [Department of Planning](#), [Department of Commerce – Building Commission](#) and [Office of Bushfire Risk Management](#),



Figure 6

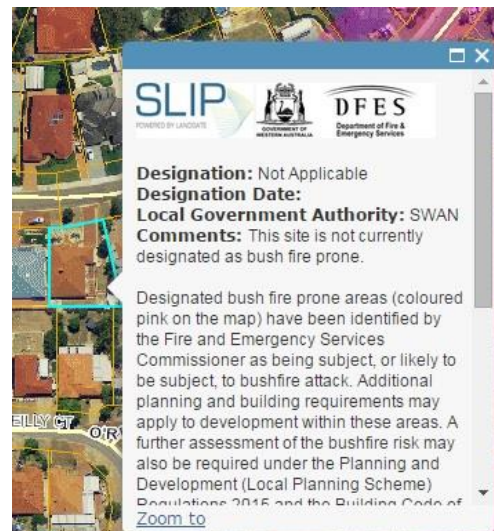


Figure 7

Further information about planning and building requirements for bush fire prone areas can be sourced from:

- the [Department of Planning](http://www.planning.wa.gov.au) website, or contact the Bushfire Policy Officer at bushfire@planning.wa.gov.au or (08) 6551 9000.
- the [Department of Commerce - Building Commission](http://www.commerce.wa.gov.au) website or contact BCinfo@commerce.wa.gov.au or 1300 489 099, or
- the planning or building section of your [local government](#).

Printing the *Map of Bush Fire Prone Areas*

You can print directly from the Map by 'right clicking' on the Map and selecting 'Print' from the list that appears. Select the settings as appropriate for your printer.

Due to differences in printers and computer set ups, you may wish to take a screenshot of the area of interest of the Map and use this when printing, as follows:

Microsoft Windows OS

- To take a screen shot of what is displayed on the screen, press 'Alt+PrtScn' by holding down the 'Alt' key and then pressing the 'PrtScn' key. The 'PrtScn' key is near the upper-right corner of your keyboard.
- Paste the screen shot into an appropriate application, for example, Paint or Microsoft Word and to paste press 'Ctrl+V' keys.
- Print from this application.

Mac OS

- Press 'Command+Shift+3' to screenshot the whole desktop screen, 'Command+Shift+4' to snapshot any selected area.
- Paste the screen shot into an appropriate application, for example Microsoft Word, by pressing 'Command+V' keys.
- Print from this application

Downloading the dataset for use in GIS

The Bush Fire Prone Areas dataset is publicly available to download from the [Landgate Shared Location Information Platform \(SLIP\)](#) and data.wa.gov.au websites in Shapefile, Web Mapping Service (WMS) and Web Feature Service (WFS) format. Historical Bush Fire Prone Areas datasets are also available to download from these websites. For more information refer to the [SLIP Frequently Asked Questions](#) and [Terms and Conditions](#).

Providing feedback and suggestions for improvement

Please provide Map feedback and suggestions for improvement through the [Feedback Survey](#) or, if the matter is urgent by emailing obrm@dfes.wa.gov.au.

Troubleshooting

Please consult the following list of common technical issues. The Map of Bush Fire Prone Areas will work best in Google Chrome, which may assist if experiencing functionality issues. If you have a question that is not addressed in this list, please contact the Office of Bushfire Risk Management at obrm@dfes.wa.gov.au

- **My pop-up box has numbers in brackets, for example (1 of 2) appearing?**

When it is unclear which property you have clicked on, numbers in brackets, for example (1 of 2), may appear in the blue heading of the pop-up box. This most commonly occurs when you are quite zoomed out, as you may have clicked in the vicinity of many properties. Tip – zoom in and click again on your property of interest. You can confirm which property the information relates to by ensuring that the bright blue border is appearing around your property of interest.



Figure 8

Alternatively, clicking on the white arrow in the blue heading of the pop-up box will display the neighboring properties that were picked up in your original search. You will see the bright blue border move to another property boundary when you click the arrow and the number in brackets change, for example (2 of 2).

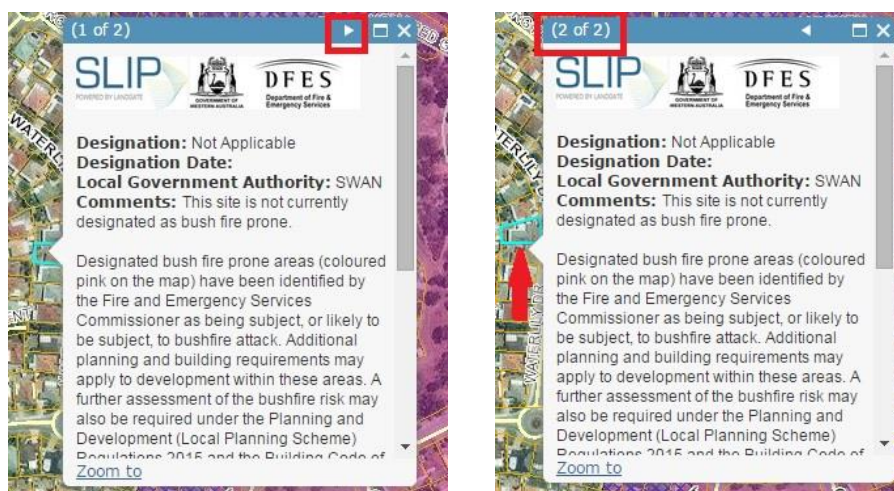


Figure 9

- **Some areas of the Map are not drawing (loading) properly?**

The Map may not draw (load) new areas properly when it has been left idle for a period of time. Tip – refresh the Map by clicking reset view or by pressing the ‘F5’ button.

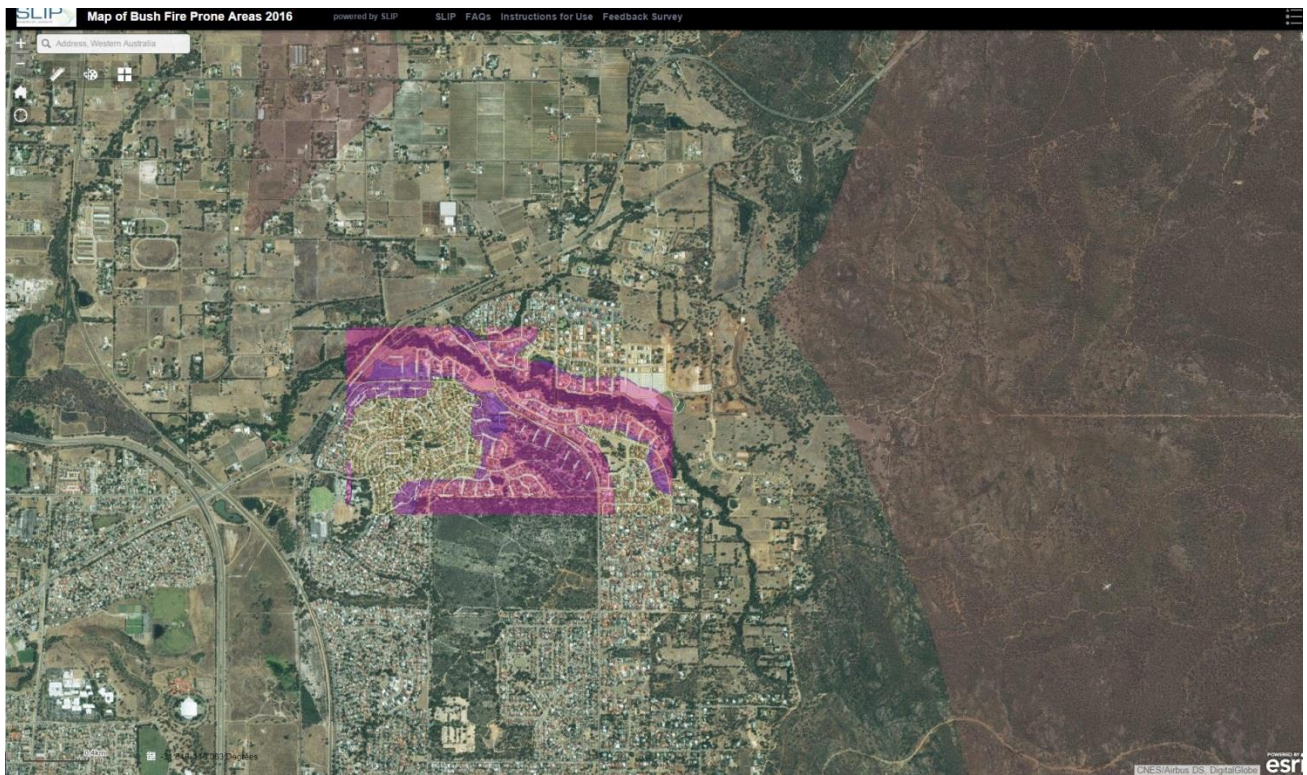


Figure 10

- **Why can't I find my new property using the search function on the Map?**

There is a time lag between properties being created and the ESRI property street address database being updated. You may be able to locate the new address using the Proposed Roads search function (refer above section on searching). Other than navigating to the location manually, you can also search using GPS coordinates if you have these available for the property or area of interest. Coordinates can be searched using a latitude, longitude format (for example, -31.976,115.765). *Note there is no space after the comma between the coordinates.*